

GIRLS' SWEET 16 CHAMPIONSHIP

Semifinals

NICHOLAS COUNTY

VS.

CLAY COUNTY

March 27, 1993

VISITORS (Last Name, First)

NO.	CLAY COUNTY	Tot FG		3-POINT		FT	FTA	Rebounds			PF	TP	A	TO	BLK	S	TIME	
		FG	FGA	FG	FGA			OFF	DEF	TOT								
45	REID, AMANDA	2	6	0	0	3	4	5	4	9	4	7	0	1	0	1	29:11	
51	JACKSON, VONDA	3	9	0	0	0	0	2	5	7	5	6	0	2	0	0	28:41	
55	DEZARN, LESLEY	3	9	0	0	0	2	3	2	5	4	6	0	0	1	0	20:23	
25	GRAY, ANGELA	1	4	0	0	0	0	1	3	4	1	2	3	2	1	0	32:00	
31	SANDLIN, ANGIE	1	3	0	1	1	2	0	1	1	4	3	1	5	0	0	25:50	
23	MILLER, LESLIE	1	7	1	5	3	4	0	0	0	5	6	0	2	0	1	21:29	
15	BARNES, GRETCHEN	0	0	0	0	1	2	0	0	0	0	1	0	0	0	0	2:09	
41	MESSER, CRYSTAL	0	0	0	0	0	0	0	1	1	1	0	0	0	0	0	0:17	
TEAM REBOUNDS (INCLUDED IN TOTALS)								2	1	3								
TOTALS		11	38	1	6	8	14	13	17	30	24	31	4	12	2	2	160	
TOTAL FG 1st HALF		0/7	0.0%	2nd HALF		11/31	35.5%	GAME		11/38	28.9%	DEADBALL						
3-POINT FG 1st HALF		0/1	0.0%	2nd HALF		1/5	20.0%	GAME		1/6	16.7%	REBOUNDS				4		
FREE THROWS 1st HALF		4/6	66.7%	2nd HALF		4/8	50.0%	GAME		8/14	57.1%							

HOME (Last Name, First)

NO.	NICHOLAS COUNTY	Tot FG		3-POINT		FT	FTA	Rebounds			PF	TP	A	TO	BLK	S	TIME	
		FG	FGA	FG	FGA			OFF	DEF	TOT								
11	LINVILLE, RENEE	1	6	1	6	0	0	0	1	1	4	3	0	0	0	0	32:00	
20	SCHANDING, E.	0	1	0	0	0	0	0	1	1	1	0	0	3	0	1	32:00	
52	DENKINS, KIM	2	6	0	0	13	18	5	9	14	4	17	0	0	4	1	31:52	
21	SMOOT, NIKKI	1	6	0	2	9	11	1	1	2	1	11	0	3	0	0	32:00	
22	HATTON, CHRISTIE	2	5	0	1	2	4	0	2	2	0	6	1	3	0	1	29:48	
12	GEORGE, TARA	0	0	0	0	0	0	0	0	0	0	0	0	0	0	0	2:12	
53	HOPKINS, H.	0	0	0	0	0	0	0	0	0	0	0	0	0	0	0	0:8	
TEAM REBOUNDS (INCLUDED IN TOTALS)								1	1	2								
TOTALS		6	24	1	9	24	33	7	15	22	10	37	1	9	4	3	160	
TOTAL FG 1st HALF		1/6	16.7%	2nd HALF		5/18	27.8%	GAME		6/24	25.0%	DEADBALL						
3-POINT FG 1st HALF		0/3	0.0%	2nd HALF		1/6	16.7%	GAME		1/9	11.1%	Rebounds				4		
FREE THROWS 1st HALF		0/0	0.0%	2nd HALF		24/33	72.7%	GAME		24/33	72.7%							

OFFICIALS: LYNN RUSSELL, RONNIE DAY, ALT.-T. HUTTON
 Technicals: None

SCORE BY PERIODS					
CLAY COUNTY	4	10	4	13	= 31
NICHOLAS COUNTY	2	13	6	16	= 37

Attendance: 4,150

COMMENTS: POINTS OFF TURNOVERS				SECOND CHANCE POINTS			
CLAY COUNTY	6	NICHOLAS COUNTY	11	CLAY COUNTY	9	NICHOLAS COUNTY	10

Player	Team	NICHOLAS COUNTY	Time	Score	CLAY COUNTY	Player	Team
LINVILLE, RENEE, SCHANDING, E., DENKINS, KIM, SHOOT, NIKKI, HATTON, CHRISTIE			MILLER, LESLIE, JACKSON, VONDA, REID, AMANDA, SANDLIN, ANGIE, GRAY, ANGELA				
			Ball to TIGERETTES				
			4 7:54	21-20*	4 ft Lane Turnaround by REID, AMANDA	1-5	20.0% 7-25 28.0%
			Assist by GRAY, ANGELA				
3	1	Foul on LINVILLE, RENEE	4 7:51			3	3
			4 7:51	21-21*	REID, AMANDA, 1 Free Throw made	3-3	100% 7-9 77.7%
			4 5:39	21-23*	4 ft Lane Driving by REID, AMANDA	2-6	33.3% 8-29 27.5%
4	2	Foul on LINVILLE, RENEE	4 5:38				
			4 5:38		REID, AMANDA, 1 Free Throw missed	3-4	75.0% 7-10 70.0%
			4 5:32		Foul on REID, AMANDA	3	10
4-4	100%	12-16 75.0%	4 5:32	*23-23			
			SMOOT, NIKKI, 2 Free Throws made both				
			4 5:21	23-25*	Driving Layup by SANDLIN, ANGIE	1-2	50.0% 9-30 30.0%
2-5	40.0%	6-23 26.0%	4 5:02	*25-25			
			4 ft Lane Follow by DENKINS, KIM				
			4 3:56		Foul on REID, AMANDA	4	11
			4 3:55		Sub In: DEZARN, LESLEY Out: REID, AMANDA		
REB: 18 A: 1 BLK: 3 TO: 9 PF: 2			4 3:55		REB: 24 A: 3 BLK: 2 TO: 8 PF: 11		
S: 2 FT: 12-16 75.0% FG: 6-23 26.0%			T I M E - O U T CLAY COUNTY No. 1 S: 2 FT: 7-10 70.0% FG: 9-32 28.1%				
6-6	100%	14-18 77.7%	4 3:55	*27-25			
			SMOOT, NIKKI, 2 Free Throws made both				
			4 3:55		Sub In: REID, AMANDA Out: MILLER, LESLIE		
			4 3:27	27-27*	4 ft Lane Turnaround by DEZARN, LESLEY	3-8	37.5% 10-33 30.3%
			Assist by SANDLIN, ANGIE				
			Foul on DEZARN, LESLEY				
7-8	87.5%	15-20 75.0%	4 2:57			1	4
			SMOOT, NIKKI, 2 Free Throws missed 1st made 2nd				
			4 2:57	*28-27		4	12
			Foul on DENKINS, KIM				
			4 2:34				
			4 2:34		DEZARN, LESLEY, 2 Free Throws missed both	0-2	00.0% 7-12 58.3%
			4 1:54		Foul on SANDLIN, ANGIE	4	13
			4 1:54		Sub In: MILLER, LESLIE Out: DEZARN, LESLEY		
9-10	90.0%	17-22 77.2%	4 1:54	*30-27			
			SMOOT, NIKKI, 1 & Bonus made both				
REB: 18 A: 1 BLK: 4 TO: 9 PF: 3			4 1:44		REB: 26 A: 4 BLK: 2 TO: 10 PF: 13		
S: 3 FT: 17-22 77.2% FG: 6-23 26.0%			T I M E - O U T CLAY COUNTY No. 2 S: 2 FT: 7-12 58.3% FG: 10-34 29.4%				
8-10	80.0%	19-24 79.1%	4 1:26		Foul on MILLER, LESLIE	3	14
			DENKINS, KIM, 2 Free Throws made both				
			4 1:26	*32-27			
			4 1:06		Foul on GRAY, ANGELA	1	15
8-11	72.7%	19-25 76.0%	4 1:06				
			DENKINS, KIM, 1 & Bonus missed 1st				
			4 0:50				
			Foul on SHOOT, NIKKI				
			4 0:44		Foul on JACKSON, VONDA	4	16
10-13	76.9%	21-27 77.7%	4 0:44	*34-27			
			DENKINS, KIM, 1 & Bonus made both				
REB: 20 A: 1 BLK: 4 TO: 9 PF: 4			4 0:40		REB: 27 A: 4 BLK: 2 TO: 12 PF: 16		
S: 3 FT: 21-27 77.7% FG: 6-24 25.0%			T I M E - O U T CLAY COUNTY No. 3 S: 2 FT: 7-12 58.3% FG: 10-35 28.5%				
11-15	73.3%	22-29 75.8%	4 0:38		Foul on MILLER, LESLIE	4	17
			DENKINS, KIM, 1 & Bonus made 1st missed 2nd				
			4 0:38	*35-27			
			4 0:27		Foul on JACKSON, VONDA	5	18
			Sub In: BARNES, GRETCHEN Out: JACKSON, VONDA				
9-11	81.8%	22-30 73.3%	4 0:27				
			SMOOT, NIKKI, 1 & Bonus missed 1st				
			4 0:19	35-30*	3 pt 24 ft Right Angle Jump shot by		
			MILLER, LESLIE				
						1-7	14.2% 11-37 29.7%
REB: 21 A: 1 BLK: 4 TO: 9 PF: 4			4 0:18		REB: 29 A: 4 BLK: 2 TO: 12 PF: 18		
S: 3 FT: 22-30 73.3% FG: 6-24 25.0%			T I M E - O U T CLAY COUNTY No. 4 S: 2 FT: 7-12 58.3% FG: 11-37 29.7%				
11-16	68.7%	22-31 70.9%	4 0:17		Foul on MILLER, LESLIE	5	19
			DENKINS, KIM, 1 & Bonus missed 1st				
			4 0:17		Sub In: HESSER, CRYSTAL Out: MILLER, LESLIE		
			4 0:17				
			4 0:06				
REB: 21 A: 1 BLK: 4 TO: 9 PF: 5			4 0:06		REB: 30 A: 4 BLK: 2 TO: 12 PF: 19		
S: 3 FT: 22-31 70.9% FG: 6-24 25.0%			No. 3 NICHOLAS COUNTY T I M E - O U T S: 2 FT: 7-12 58.3% FG: 11-37 29.7%				
13-18	72.2%	24-33 72.7%	4 0:06	35-31*	BARNES, GRETCHEN, 2 Free Throws made 1st missed 2nd	1-2	50.0% 8-14 57.1%
			DENKINS, KIM, 1 & Bonus made both				
			4 0:06		Foul on HESSER, CRYSTAL	1	20
			4 0:06	*37-31			
			4 0:00		3 pt 26 ft Right Side Jump shot by SANDLIN, ANGIE, missed	1-3	33.3% 11-38 28.9%

Player Team NICHOLAS COUNTY

 LINVILLE, RENEE, SCHANDING, E., DENKINS, KIM, SHOOT, NIKKI, HATTON, CHRISTIE

PAGE : 1

Time Score

CLAY COUNTY Player Team

5-6 83.3% 7-9 77.7% DENKINS, KIM, 2 Free Throws missed 1st made 2nd
 1-4 25.0% 5-16 31.2% 12 ft Right Side Jump shot by SHOOT, NIKKI

REID, AMANDA, JACKSON, VONDA, DEZARN, LESLEY, GRAY, ANGELA, SANDLIN, ANGIE
 Ball to TIGERETTES
 3 7:48 15-16* 2 ft Lane Follow by JACKSON, VONDA 2-4 50.0% 5-17 29.4%
 3 6:42 Foul on DEZARN, LESLEY 2 1
 3 6:42 *16-16
 3 6:32 *18-16
 3 5:56 18-18* 6 ft Left Base Line Jump shot by JACKSON, VONDA 3-5 60.0% 6-18 33.3%
 3 5:49 Foul on SANDLIN, ANGIE 1 2
 3 5:08 Foul on REID, AMANDA 1 3
 3 4:22 Foul on REID, AMANDA 2 4
 3 4:22 Sub In: MILLER, LESLIE Out: DEZARN, LESLEY

REB: 11 A: 1 BLK: 2 TO: 6 PF: 0
 S: 1 FT: 7-9 77.7% FG: 5-18 27.7%

No. 1 NICHOLAS COUNTY TIME - O U T

REB: 17 A: 2 BLK: 1 TO: 5 PF: 4
 S: 1 FT: 6-8 75.0% FG: 6-21 28.5%

REB: 11 A: 1 BLK: 2 TO: 6 PF: 0
 S: 1 FT: 7-9 77.7% FG: 5-18 27.7%

No. 2 NICHOLAS COUNTY TIME - O U T

REB: 17 A: 2 BLK: 1 TO: 5 PF: 4
 S: 1 FT: 6-8 75.0% FG: 6-21 28.5%

2-2 100% 9-11 81.8% SHOOT, NIKKI, 2 Free Throws made both

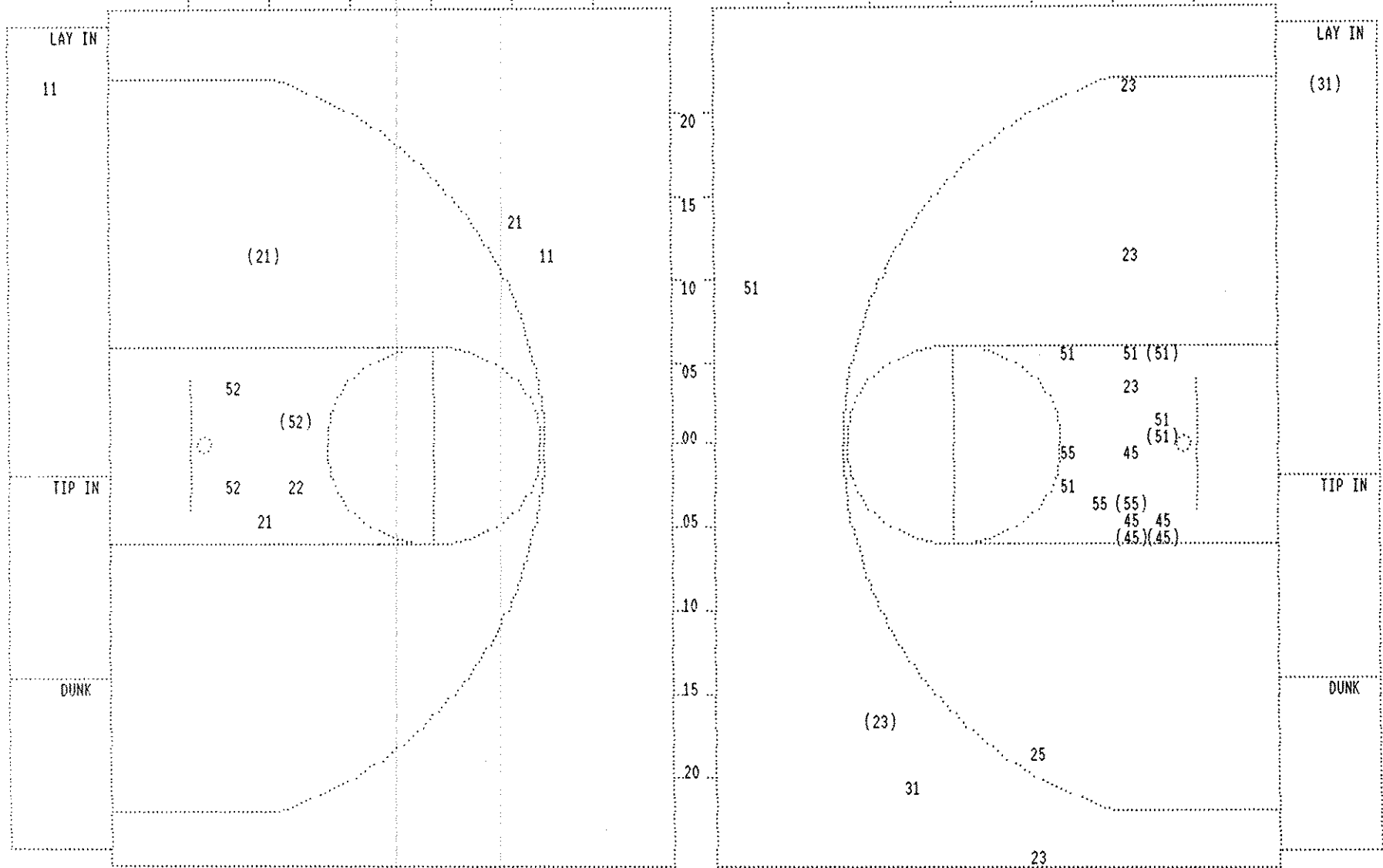
3 2:52 Foul on JACKSON, VONDA 3 5
 3 2:52 *20-18
 3 2:52 Sub In: DEZARN, LESLEY Out: JACKSON, VONDA
 3 2:35 Foul on SANDLIN, ANGIE 2 6
 3 2:22 Foul on DEZARN, LESLEY 3 7

6-8 75.0% 10-13 76.9% DENKINS, KIM, 2 Free Throws made 1st missed 2nd

3 2:22 *21-18
 3 2:18 Foul on SANDLIN, ANGIE 3 8
 3 1:42 Foul on MILLER, LESLIE 2 9
 3 1:42 Sub In: BARNES, GRETCHEN Out: MILLER, LESLIE
 3 1:42
 3 0:06 Sub In: MILLER, LESLIE Out: SANDLIN, ANGIE

2-4 50.0% 10-14 71.4% HATTON, CHRISTIE, 1 & Bonus missed 1st

SECOND HALF SHOT CHART Produced by the KHSAA Sweet Sixteen Stat Crew with FINAL III - a Product of LEXICON SPORTS™



NICHOLAS COUNTY					
Player					
11 - LINVILLE, K	0 / 2	0.0%			
52 - DENKINS, K	1 / 3	33.3%			
21 - SNOOT, NIK	1 / 3	33.3%			
22 - HATTON, CHR	0 / 1	0.0%			
	Layups	1-9 Ft	10-15 Ft	Over 15 Ft	3 Pointers Total
	0 / 1	1 / 5	1 / 1	0 / 2	2 / 9
	0.0%	20.0%	100.0%	0.0%	22.2%

CLAY COUNTY					
Player					
45 - REID, AMAN	2 / 5	40.0%			
51 - JACKSON, V	2 / 7	28.5%			
55 - DEZARN, LE	1 / 3	33.3%			
25 - GRAY, ANGE	0 / 1	0.0%			
31 - SANDLIN, A	1 / 2	50.0%			
	Layups	1-9 Ft	10-15 Ft	Over 15 Ft	3 Pointers Total
	1 / 1	5 / 15	0 / 1	0 / 2	1 / 4
	100.0%	33.3%	0.0%	0.0%	25.0%

VISITORS (Last Name, First)

NO.	CLAY COUNTY	Tot FG		3-POINT		FT	FTA	Rebounds			PF	TP	A	TO	BLK	S	TIME
		FG	FGA	FG	FGA			OFF	DEF	TOT							
45	REID, AMANDA	0	1	0	0	2	2	0	2	2	0	2	0	0	0	0	13:11
51	JACKSON, VONDA	1	2	0	0	0	0	1	2	3	2	2	0	0	0	0	16:00
55	DEZARN, LESLEY	2	6	0	0	0	0	2	1	3	1	4	0	0	1	0	11:52
25	GRAY, ANGELA	1	3	0	0	0	0	1	2	3	0	2	2	1	0	0	16:00
31	SANDLIN, ANGIE	0	1	0	0	1	2	0	0	0	0	1	0	2	0	0	9:56
23	MILLER, LESLIE	0	2	0	2	3	4	0	0	0	1	3	0	0	0	1	13:01
TEAM REBOUNDS (INCLUDED IN TOTALS)								1	1	2							
TOTALS		4	15	0	2	6	8	5	8	13	4	14	2	3	1	1	80
TOTAL FG		1st HALF 0/7		2nd HALF 0/7		50.0% GAME		4/15		26.7%		DEADBALL					
3-POINT FG		1st HALF 0/1		2nd HALF 0/1		0.0% GAME		0/2		0.0%		REBOUNDS		2			
FREE THROWS		1st HALF 4/6		2nd HALF 2/2		100.0% GAME		6/8		75.0%							

HOME (Last Name, First)

NO.	NICHOLAS COUNTY	Tot FG		3-POINT		FT	FTA	Rebounds			PF	TP	A	TO	BLK	S	TIME
		FG	FGA	FG	FGA			OFF	DEF	TOT							
11	LINVILLE, RENEE	1	4	1	4	0	0	0	0	0	2	3	0	0	0	0	16:00
20	SCHANDING, E.	0	1	0	0	0	0	0	0	0	1	0	0	3	0	0	16:00
52	DENKINS, KIM	1	3	0	0	4	4	3	2	5	2	6	0	0	2	0	15:52
21	SMOOT, NIKKI	0	3	0	1	0	0	0	1	1	0	0	0	2	0	0	16:00
22	HAYTON, CHRISTIE	2	4	0	1	2	3	0	1	1	0	6	1	0	0	0	13:48
12	GEORGE, TARA	0	0	0	0	0	0	0	0	0	0	0	0	0	0	0	2:12
53	HOPKINS, M.	0	0	0	0	0	0	0	0	0	0	0	0	0	0	0	0:8
TEAM REBOUNDS (INCLUDED IN TOTALS)								1	1	2							
TOTALS		4	15	1	6	6	7	4	5	9	5	15	1	5	2	0	80
TOTAL FG		1st HALF 1/6		2nd HALF 3/9		33.3% GAME		4/15		26.7%		DEADBALL					
3-POINT FG		1st HALF 0/3		2nd HALF 1/3		33.3% GAME		1/6		16.7%		Rebounds		1			
FREE THROWS		1st HALF 0/0		2nd HALF 6/7		85.7% GAME		6/7		85.7%							

OFFICIALS: LYNN RUSSELL, RONNIE DAY, ALT. - T. HUTTON
 Technicals: None

SCORE BY PERIODS			
CLAY COUNTY	4	10	= 14
NICHOLAS COUNTY	2	13	= 15

Attendance:		POINTS OFF TURNOVERS		SECOND CHANCE POINTS	
CLAY COUNTY	4	NICHOLAS COUNTY	2	CLAY COUNTY	5
				NICHOLAS COUNTY	6

CLAY COUNTY "TIGERETTES" vs NICHOLAS COUNTY "LADY JACKETS"
 1st Half Play by Play

Tip off at 10:00 a.m. on 03/27/93 at GIRLS STATE TOURNEY GM 13
 Produced by the KHSAA Sweet Sixteen Stat Crew with FINAL III - a Product of LEXICON

PAGE : 1

Player	Team	NICHOLAS COUNTY
LINVILLE, RENEE	SCHANDING	E., DENKINS, KIM, SMOOT, NIKKI, HATTON, CHRISTIE
1-1	100%	1-2 50.0% 4 ft Lane Turnaround by DENKINS, KIM
1	1	Foul on DENKINS, KIM
1	2	Foul on LINVILLE, RENEE
2	3	Foul on LINVILLE, RENEE
2	4	Sub In: GEORGE, TARA Out: HATTON, CHRISTIE Foul on DENKINS, KIM Sub In: HOPKINS, M. Out: DENKINS, KIM

Time	Score	CLAY COUNTY	Player	Team
		REID, AMANDA, JACKSON, VONDA, DEZARN, LESLEY, GRAY, ANGELA, SANDLIN, ANGIE		
1 6:59	*2-0			
1 5:01		Sub In: MILLER, LESLIE Out: REID, AMANDA		
1 5:01	2-2*	MILLER, LESLIE, 2 Free Throws made both	2-2	100% 2-2 100%
1 4:48				
1 4:23				
1 4:22	2-3*	SANDLIN, ANGIE, 2 Free Throws missed 1st made 2nd	1-2	50.0% 3-4 75.0%
1 3:20		Foul on DEZARN, LESLEY	1	1
1 2:12		Sub In: REID, AMANDA Out: DEZARN, LESLEY		
1 2:12				
1 0:09				
1 0:08				
1 0:08	2-4*	MILLER, LESLIE, 2 Free Throws missed 1st made 2nd	3-4	75.0% 4-6 66.6%

CLAY COUNTY "TIGERETTES" vs NICHOLAS COUNTY "LADY JACKETS"
 1st Half Play by Play

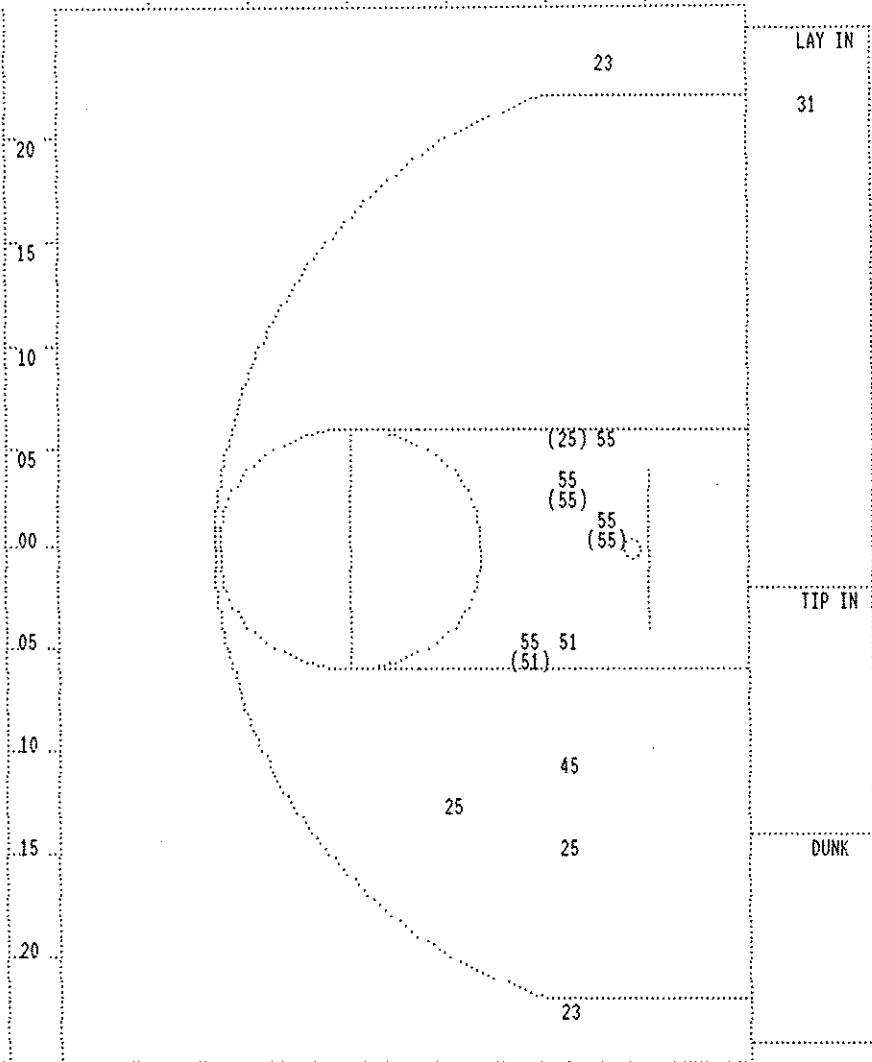
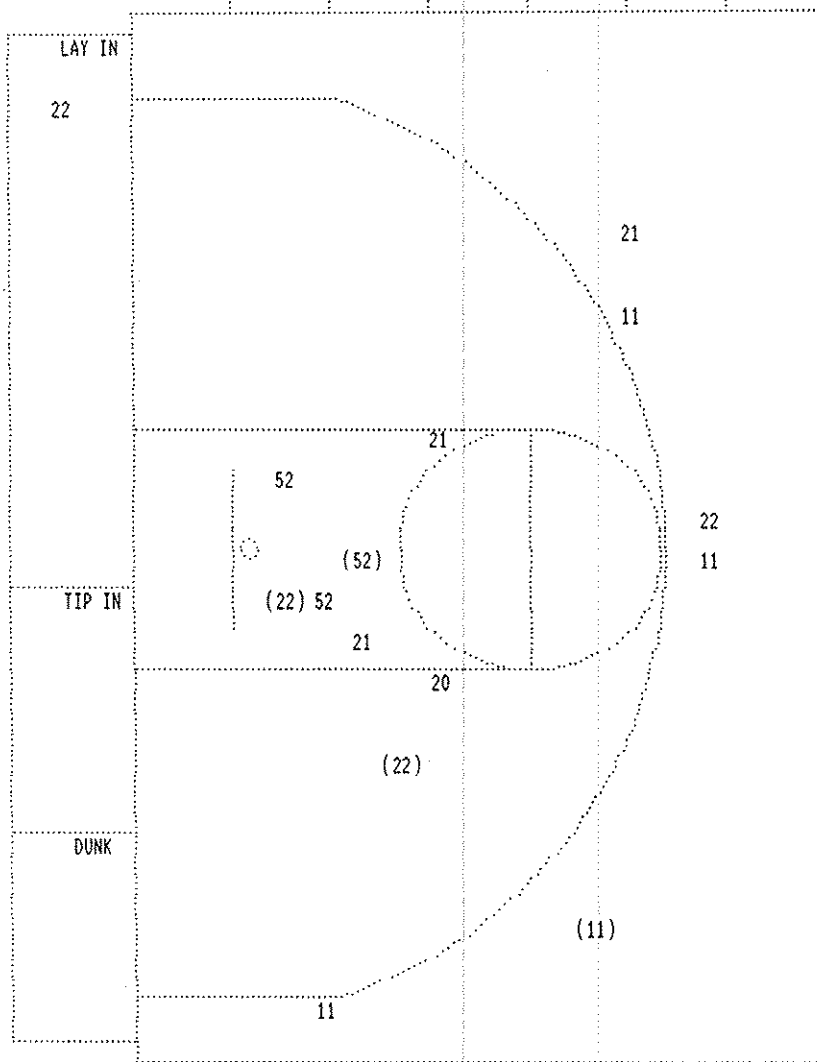
PAGE : 2

Tip off at 10:00 a.m. on 03/27/93 at GIRLS STATE TOURNEY GM 13
 Produced by the KHSAA Sweet Sixteen Stat Crew with FINAL III - a Product of LEXICON

Player	Team	NICHOLAS COUNTY		
LINVILLE, RENEE, SCHANDING, E., DENKINS, KIM, SMOOT, NIKKI, HATTON, CHRISTIE Ball to LADY JACKETS				
2-2	100%	2-2	100%	DENKINS, KIM, 2 Free Throws made both
1		5		Foul on SCHANDING, E.
2-2	100%	4-4	100%	HATTON, CHRISTIE, 2 Free Throws made both
2-3	66.6%	4-5	80.0%	HATTON, CHRISTIE, 1 Free Throw missed
1-3	33.3%	2-10	20.0%	2 ft Lane Driving by HATTON, CHRISTIE
4-4	100%	6-7	85.7%	DENKINS, KIM, 2 Free Throws made both
2-4	50.0%	3-13	23.0%	12 ft Left Side Jump shot by HATTON, CHRISTIE
1-4	25.0%	4-15	26.6%	3 pt 24 ft Left Side Jump shot by LINVILLE, RENEE
1		1		Assist by HATTON, CHRISTIE

Time	Score	CLAY COUNTY	Player	Team
MILLER, LESLIE, JACKSON, VONDA, REID, AMANDA, SANDLIN, ANGIE, GRAY, ANGELA				
2 7:28		Foul on JACKSON, VONDA	1	2
2 7:28	*4-4			
2 6:36	4-6*	6 ft Lane Turnaround by JACKSON, VONDA Assist by GRAY, ANGELA	1-2	50.0% 1-8 12.5%
			1	1
2 6:07				
2 6:04		Sub In: DEZARN, LESLEY Out: SANDLIN, ANGIE		
2 6:04	4-8*	REID, AMANDA, 2 Free Throws made both	2-2	100% 6-8 75.0%
2 5:39		Foul on MILLER, LESLIE	1	3
2 5:39	*6-8			
2 5:25	*8-8			
2 5:14	8-10*	2 ft Lane Follow by DEZARN, LESLEY	1-5	20.0% 2-11 18.1%
2 4:56		Foul on JACKSON, VONDA	2	4
2 4:56	*10-10			
2 3:06	*12-10			
2 2:40	12-12*	6 ft Left Side Driving by GRAY, ANGELA	1-3	33.3% 3-13 23.0%
2 1:37	12-14*	4 ft Lane Jump shot by DEZARN, LESLEY Assist by GRAY, ANGELA	2-6	33.3% 4-15 26.6%
			2	2
2 0:06	*15-14			

FIRST HALF SHOT CHART Produced by the KHSAA Sweet Sixteen Stat Crew with FINAL III - a Product of LEXICON SPORTS™



NICHOLAS COUNTY					
Player					
11 - LINVILLE, J	1 / 4	25.0%			
20 - SCHANDING, J	0 / 1	0.0%			
52 - DENKINS, K	1 / 3	33.3%			
21 - SMOOT, NIK	0 / 3	0.0%			
22 - HATTON, CHR	2 / 4	50.0%			
Layups	1-9 Ft	10-15 Ft	Over 15 Ft	3 Pointers	Total
0 / 1	2 / 5	1 / 3		1 / 6	4 / 15
0.0%	40.0%	33.3%		16.7%	26.7%

CLAY COUNTY					
Player					
45 - REID, AMAN	0 / 1	0.0%			
51 - JACKSON, V	1 / 2	50.0%			
55 - DEZARN, LE	2 / 6	33.3%			
25 - GRAY, ANGE	1 / 3	33.3%			
31 - SANDLIN, A	0 / 1	0.0%			
23 - MILLER, LE	0 / 2	0.0%			
Layups	1-9 Ft	10-15 Ft	Over 15 Ft	3 Pointers	Total
0 / 1	4 / 9	0 / 3		0 / 2	4 / 15
0.0%	44.4%	0.0%		0.0%	26.7%